

## 24" Square Molded Melamine Tabletop without umbrella hole



Length: 24"  
Width: 24"  
Weight: 10.5 lbs  
Thickness: 0.67"

### Product Specifications

Product Description	Reference Number	Color	UPC Code 014306	Weight Each (lbs.)	Master Pack	Master Pack Volume (cu. ft)
24" Square Molded Melamine Tabletop without hole	UT210004	White	935799	14.00	1	0.54
	UT210025	Granite Green	935768	14.00	1	0.54
	UT210781	Tokyo Stone	935782	14.00	1	0.54
	UT210742	Aged Oak	935737	14.00	1	0.54
	UT210780	Barn White	935744	14.00	1	0.54
	UT211038	Granite	939247	14.00	1	0.54
	UT210815	Almeria	940083	14.00	1	0.54
	UT210816	Arizona	940182	14.00	1	0.54

### Features & Benefits

Warranty: 2 Yrs.

- Trendy marble, granite finish, or deco tops to complement all Grosfillex chairs.
- Hard, smooth molded tabletop made of a molded wood/resin body with a fusion bonded melamine top.
- Stain, burn, scratch, and fade resistant.
- Use Grosfillex's wide 4-prong central resin pedestal base 1000, tilt top aluminum base 100, or aluminum central pedestal base, or bar height table base with anti-skid glides for stability. Compatible with X-one base.
- Cleans easily with soap and water.
- Specifically designed and engineered for indoor/outdoor terraces, bars, breakfast areas, concessions, and balconies.
- Customize designs by mixing and matching tabletops and bases.
- Top and Base sold separately.

The shape of the table top may bend to a concave shape when exposed to direct sunlight. A deflection of as much as 3/16" per linear foot of table length can be expected. This is not a manufacturing defect as this deformation will not affect the structural integrity of the table nor its functionality.



White



Granite Green



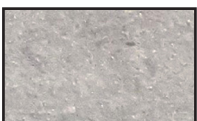
Tokyo Stone



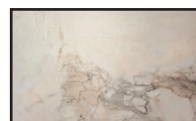
Aged Oak



Barn White



Granite



Almeria



Arizona



## 24" x 32" Molded Melamine Tabletop without umbrella hole



Length: 24"  
Width: 32"  
Weight: 15.25 lbs  
Thickness: 0.75"

### Product Specifications

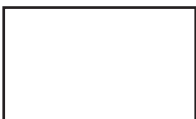
Product Description	Reference Number	Color	UPC Code 014306	Weight Each (lbs.)	Master Pack	Master Pack Volume (cu. ft)
24" x 32" Molded Melamine Tabletop without hole	UT220004	White	935874	19.00	1	0.73
	UT220025	Granite Green	935843	19.00	1	0.73
	UT220781	Tokyo Stone	935867	19.00	1	0.73
	UT220742	Aged Oak	935812	19.00	1	0.73
	UT220780	Barn White	935829	19.00	1	0.73
	UT221038	Granite	939254	19.00	1	0.73
	UT220815	Almeria	940090	19.00	1	0.73
	UT220816	Arizona	940199	19.00	1	0.73

### Features & Benefits

Warranty: 2 Yrs.

- Trendy marble, granite finish, or deco tops to complement all Grosfillex chairs.
- Hard, smooth molded tabletop made of a molded wood/resin body with a fusion bonded melamine top.
- Stain, burn, scratch, and fade resistant.
- Use Grosfillex's wide 4-prong central resin pedestal base 1000, tilt top aluminum base 100, or aluminum central pedestal base, or bar height table base with anti-skid glides for stability. Compatible with X-one base.
- Cleans easily with soap and water.
- Specifically designed and engineered for indoor/outdoor terraces, bars, breakfast areas, concessions, and balconies.
- Customize designs by mixing and matching tabletops and bases.
- Top and Base sold separately.

The shape of the table top may bend to a concave shape when exposed to direct sunlight. A deflection of as much as 3/16" per linear foot of table length can be expected. This is not a manufacturing defect as this deformation will not affect the structural integrity of the table nor its functionality.



White



Granite Green



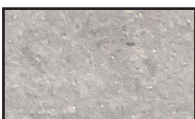
Tokyo Stone



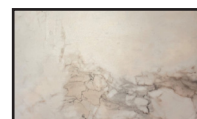
Aged Oak



Barn White



Granite



Almeria



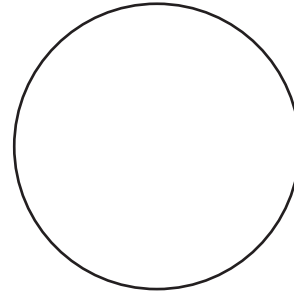
Arizona





# 28" Round Molded Melamine Tabletop

without umbrella hole



Diameter: 28"  
Weight: 14.00  
Thickness: 0.63"

## Product Specifications

Product Description	Reference Number	Color	UPC Code 014306	Weight Each (lbs.)	Master Pack	Master Pack Volume (cu. ft)
28" Round Molded Melamine Tabletop without hole	UT225004	White	925219	14.00	1	0.73
	UT225025	Granite Green	925240	14.00	1	0.73
	UT225742	Aged Oak	925288	14.00	1	0.73
	UT225780	Barn White	925295	14.00	1	0.73
	UT225038	Granite	930251	14.00	1	0.73
	UT225815	Almeria	940106	14.00	1	0.73
	UT225816	Arizona	940205	14.00	1	0.73

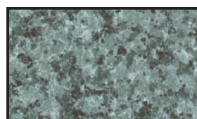
## Features & Benefits Warranty: 2 Yrs.

- Trendy marble, granite finish, or deco tops to complement all Grosfillex chairs.
- Hard, smooth molded tabletop made of a molded wood/resin body with a fusion bonded melamine top.
- Stain, burn, scratch and fade resistant.
- Use Grosfillex's wide 4-prong alpha small resin , boomerang small base, Eco-fix base, or Boomerang bar height table base with anti-skid glides for stability. X-one compatible.
- Cleans easily with soap and water.
- Specifically designed and engineered for indoor/outdoor terraces, bars, breakfast areas, concessions, and balconies.
- Customize designs by mixing and matching tabletops and bases.
- Tops and bases sold separately.

The shape of the table top may bend to a concave shape when exposed to direct sunlight. A deflection of as much as 3/16" per linear foot of table length can be expected. This is not a manufacturing defect as this deformation will not affect the structural integrity of the table nor its functionality.



White



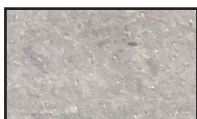
Granite Green



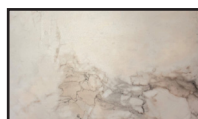
Aged Oak



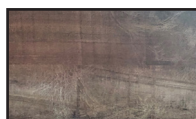
Barn White



Granite



Almeria



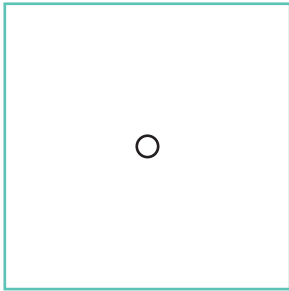
Arizona





# 32" Square Molded Melamine Tabletop

with umbrella hole



Length: 32"  
 Width: 32"  
 Weight: 19.25 lbs  
 Thickness: 0.75"

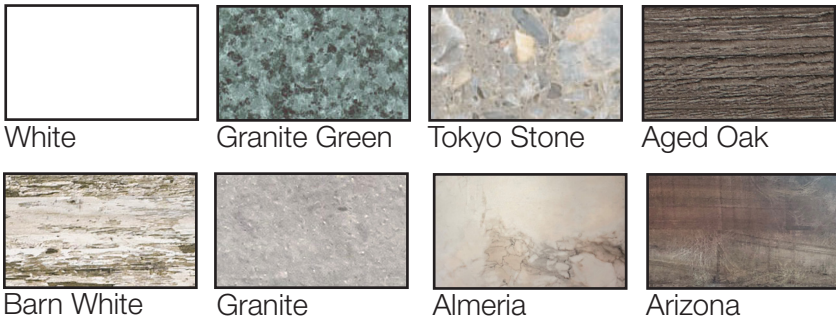
## Product Specifications

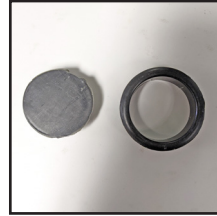
Product Description	Reference Number	Color	UPC Code 014306	Weight Each (lbs.)	Master Pack	Master Pack Volume (cu. ft)
32" Square Molded Melamine Tabletop with hole	UT235004	White	936031	27.00	1	0.88
	UT235025	Granite Green	936000	27.00	1	0.88
	UT235781	Tokyo Stone	936024	27.00	1	0.88
	UT235742	Aged Oak	935973	27.00	1	0.88
	UT235780	Barn White	935980	27.00	1	0.88
	UT236038	Granite	939278	27.00	1	0.88
	UT235815	Almeria	940120	27.00	1	0.88
	UT235816	Arizona	940229	27.00	1	0.88

## Features & Benefits Warranty: 2 Yrs.

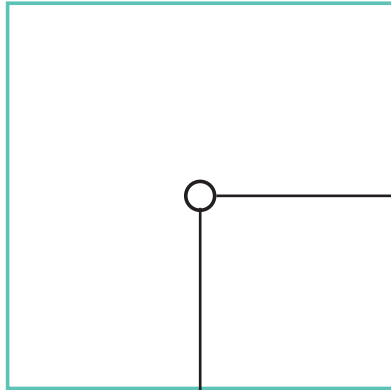
- Trendy marble, granite finish, or deco tops to complement all Grosfillex chairs.
- Hard, smooth molded tabletop made of a molded wood/resin body with a fusion bonded melamine top.
- Stain, burn, scratch, and fade resistant.
- Use Grosfillex's wide 4-prong alpha resin large base, boomerang large base, or Eco-fix small base, with anti-skid glides for stability. X-one compatible.
- Cleans easily with soap and water.
- Specifically designed and engineered for indoor/outdoor terraces, bars, and restaurants.
- Customize designs by mixing and matching tabletops and bases.
- Top and Base sold separately.

The shape of the table top may bend to a concave shape when exposed to direct sunlight. A deflection of as much as 3/16" per linear foot of table length can be expected. This is not a manufacturing defect as this deformation will not affect the structural integrity of the table nor its functionality.





Umbrella Plug & Ring USSP0011 to USSP0016



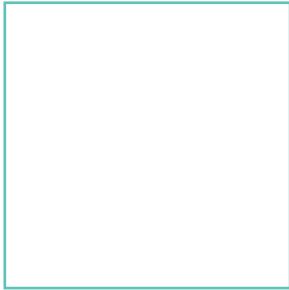
Umbrella Standard Plug USSP0027 to USSP0035

Reference #	Description
USSP0011	UMB PLUG & RING MM & FLDG CHAR
USSP0012	UMB PLUG & RING MM & FLDG WHIT
USSP0013	UMB PLUG & RING MM & FLDG WOOD
USSP0014	UMB PLUG & RING MM & FLDG BRNZ
USSP0016	UMB PLUG & RING MM & FLDG AMGR
USSP0027	UMB STD PLUG TABLE CHAR
USSP0028	UMB STD PLUG TABLE TAUPE
USSP0029	UMB STD PLUG TABLE WHITE
USSP0031	UMB STD PLUG TABLE WOOD
USSP0032	UMB STD PLUG TABLE BRONZE
USSP0035	UMB STD PLUG TABLE AMGRN



# 32" Square Molded Melamine Tabletop

without umbrella hole



Length: 32"  
Width: 32"  
Weight: 19.25 lbs  
Thickness: 0.75"

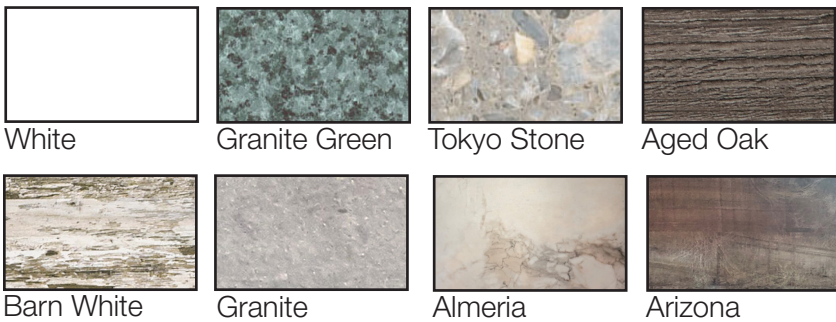
## Product Specifications

Product Description	Reference Number	Color	UPC Code 014306	Weight Each (lbs.)	Master Pack	Master Pack Volume (cu. ft)
32" Square Molded Melamine Tabletop without hole	UT230004	White	935959	27.00	1	0.88
	UT230025	Granite Green	935928	27.00	1	0.88
	UT230781	Tokyo Stone	935942	27.00	1	0.88
	UT230742	Aged Oak	935898	27.00	1	0.88
	UT230780	Barn White	935904	27.00	1	0.88
	UT231038	Granite	939261	27.00	1	0.88
	UT230815	Almeria	940113	27.00	1	0.88
	UT230816	Arizona	940212	27.00	1	0.88

## Features & Benefits Warranty: 2 Yrs.

- Trendy marble, granite finish, or deco tops to complement all Grosfillex chairs.
- Hard, smooth molded tabletop made of a molded wood/resin body with a fusion bonded melamine top.
- Stain, burn, scratch, and fade resistant.
- Use Grosfillex's wide 4-prong alpha resin large base, boomerang large base, or Eco-Fix central, with anti-skid glides for stability. X-one compatible.
- Cleans easily with soap and water.
- Specifically designed and engineered for indoor/outdoor terraces, bars, and restaurants.
- Customize designs by mixing and matching tabletops and bases.
- Top and Base sold separately.

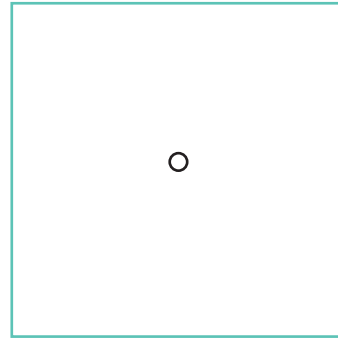
The shape of the table top may bend to a concave shape when exposed to direct sunlight. A deflection of as much as 3/16" per linear foot of table length can be expected. This is not a manufacturing defect as this deformation will not affect the structural integrity of the table nor its functionality.





# 36" Square Molded Melamine Tabletop

with umbrella hole



Length: 36"  
Width: 36"  
Weight: 30 lbs  
Thickness: 0.75"

## Product Specifications

Product Description	Reference Number	Color	UPC Code 014306	Weight Each (lbs.)	Master Pack	Master Pack Volume (cu. ft)
36" Square Molded Melamine Tabletop with hole	UT245004	White	936192	31.00	1	1.21
	UT245025	Granite Green	936161	31.00	1	1.21
	UT245742	Aged Oak	936130	31.00	1	1.21
	UT245780	Barn White	936147	31.00	1	1.21
	UT246038	Granite	939292	31.00	1	1.21
	UT245815	Almeria	940144	31.00	1	1.21
	UT245816	Arizona	940243	31.00	1	1.21

## Features & Benefits Warranty: 2 Yrs.

- Trendy marble, granite finish, or deco tops to complement all Grosfillex chairs.
- Hard, smooth molded tabletop made of a molded wood/resin body with a fusion bonded melamine top.
- Stain, burn, scratch, and fade resistant.
- Use Grosfillex's wide 4-prong alpha large resin base, boomerang large base, or Eco-fix central base, with anti-skid glides for stability.
- Cleans easily with soap and water.
- Specifically designed and engineered for indoor/outdoor terraces, bars, and restaurants.
- Customize designs by mixing and matching tabletops and bases.
- Top and Base sold separately.

The shape of the table top may bend to a concave shape when exposed to direct sunlight. A deflection of as much as 3/16" per linear foot of table length can be expected. This is not a manufacturing defect as this deformation will not affect the structural integrity of the table nor its functionality.



White



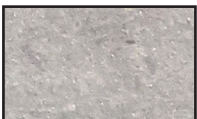
Granite Green



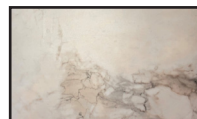
Aged Oak



Barn White



Granite

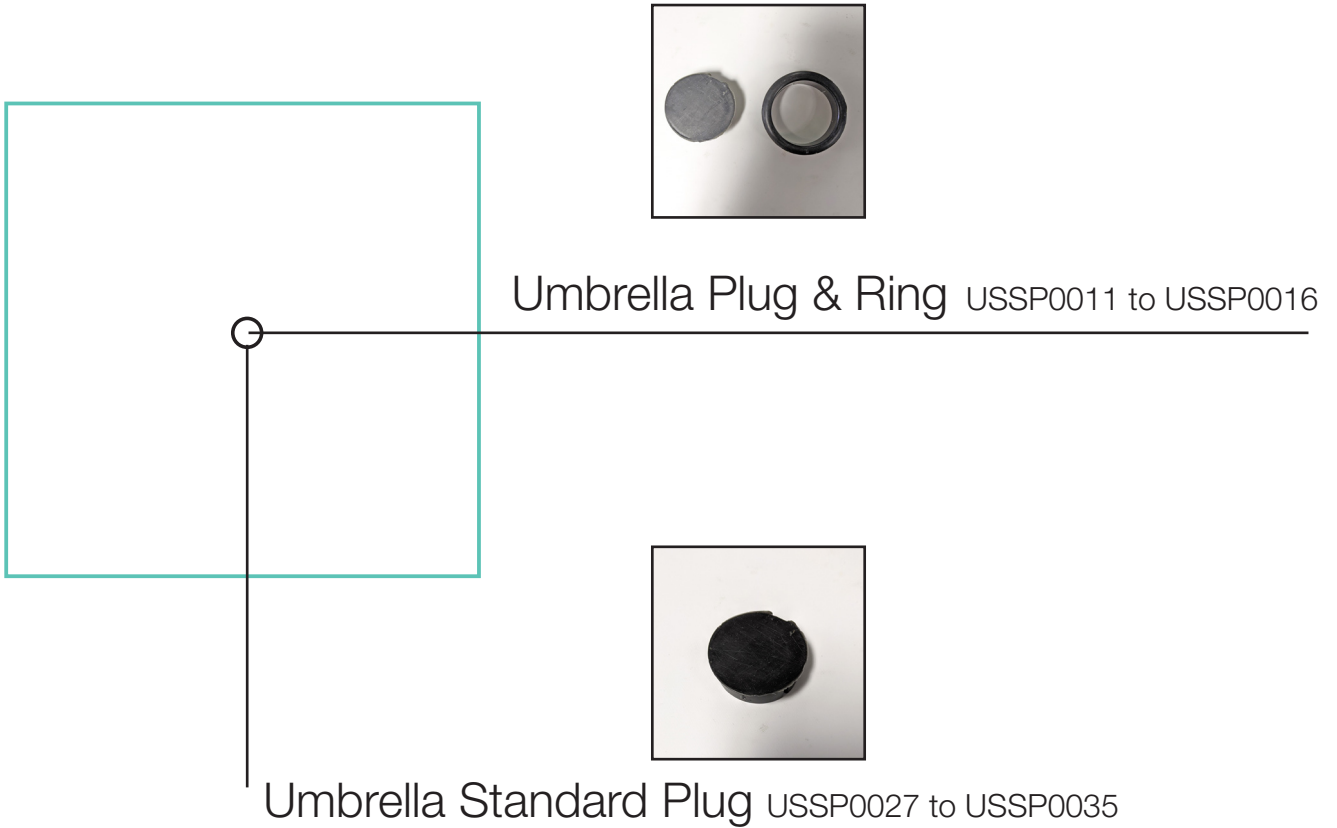


Almeria



Arizona





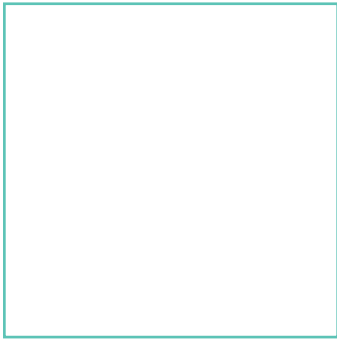
Reference #	Description
USSP0011	UMB PLUG & RING MM & FLDG CHAR
USSP0012	UMB PLUG & RING MM & FLDG WHIT
USSP0013	UMB PLUG & RING MM & FLDG WOOD
USSP0014	UMB PLUG & RING MM & FLDG BRNZ
USSP0016	UMB PLUG & RING MM & FLDG AMGR
USSP0027	UMB STD PLUG TABLE CHAR
USSP0028	UMB STD PLUG TABLE TAUPE
USSP0029	UMB STD PLUG TABLE WHITE
USSP0031	UMB STD PLUG TABLE WOOD
USSP0032	UMB STD PLUG TABLE BRONZE
USSP0035	UMB STD PLUG TABLE AMGRN





# 36" Square Molded Melamine Tabletop

without umbrella hole



Length: 36"  
Width: 36"  
Weight: 30 lbs  
Thickness: 0.75"

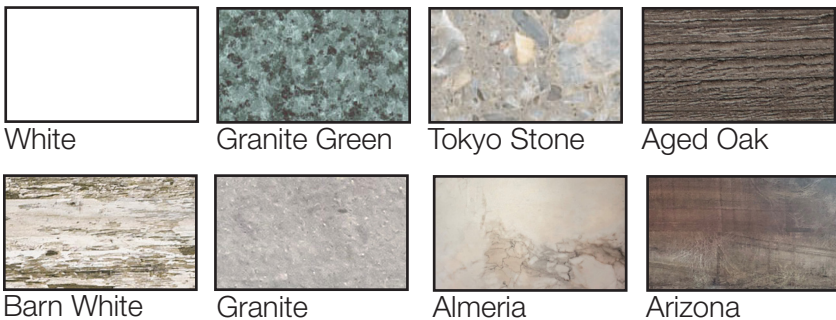
## Product Specifications

Product Description	Reference Number	Color	UPC Code 014306	Weight Each (lbs.)	Master Pack	Master Pack Volume (cu. ft)
36" Square Molded Melamine Tabletop without hole	UT240004	White	936116	31.00	1	1.21
	UT240025	Granite Green	936086	31.00	1	1.21
	UT240781	Tokyo Stone	936109	31.00	1	1.21
	UT240742	Aged Oak	936055	31.00	1	1.21
	UT240780	Barn White	936062	31.00	1	1.21
	UT241038	Granite	939285	31.00	1	1.21
	UT240815	Almeria	940137	31.00	1	1.21
	UT240816	Arizona	940236	31.00	1	1.21

## Features & Benefits Warranty: 2 Yrs.

- Trendy marble, granite finish, or deco tops to complement all Grosfillex chairs.
- Hard, smooth molded tabletop made of a molded wood/resin body with a fusion bonded melamine top.
- Stain, burn, scratch and fade resistant.
- Use Grosfillex's wide 4-prong alpha large resin base, boomerang large tilting base, X-One large base, X-One bar height base with anti-skid glides for stability.
- Cleans easily with soap and water.
- Specifically designed and engineered for indoor/outdoor terraces, bars, breakfast areas, concessions, and balconies.
- Customize designs by mixing and matching tabletops and bases.
- Tops and bases sold separately.

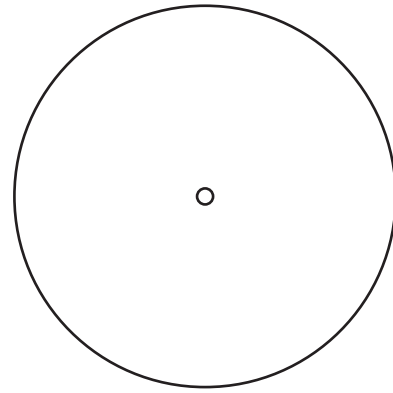
The shape of the table top may bend to a concave shape when exposed to direct sunlight. A deflection of as much as 3/16" per linear foot of table length can be expected. This is not a manufacturing defect as this deformation will not affect the structural integrity of the table nor its functionality.





# 42" Round Molded Melamine Tabletop

with umbrella hole



Diameter: 42"  
Weight: 24 lbs  
Thickness: 0.63"

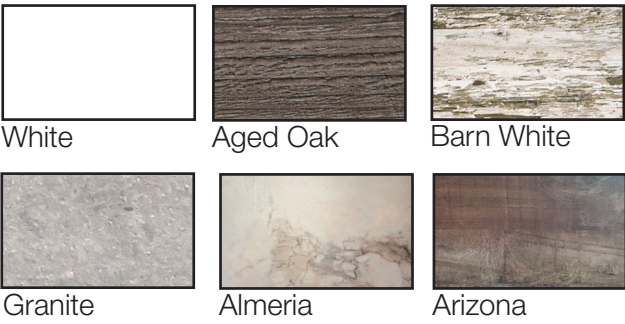
## Product Specifications

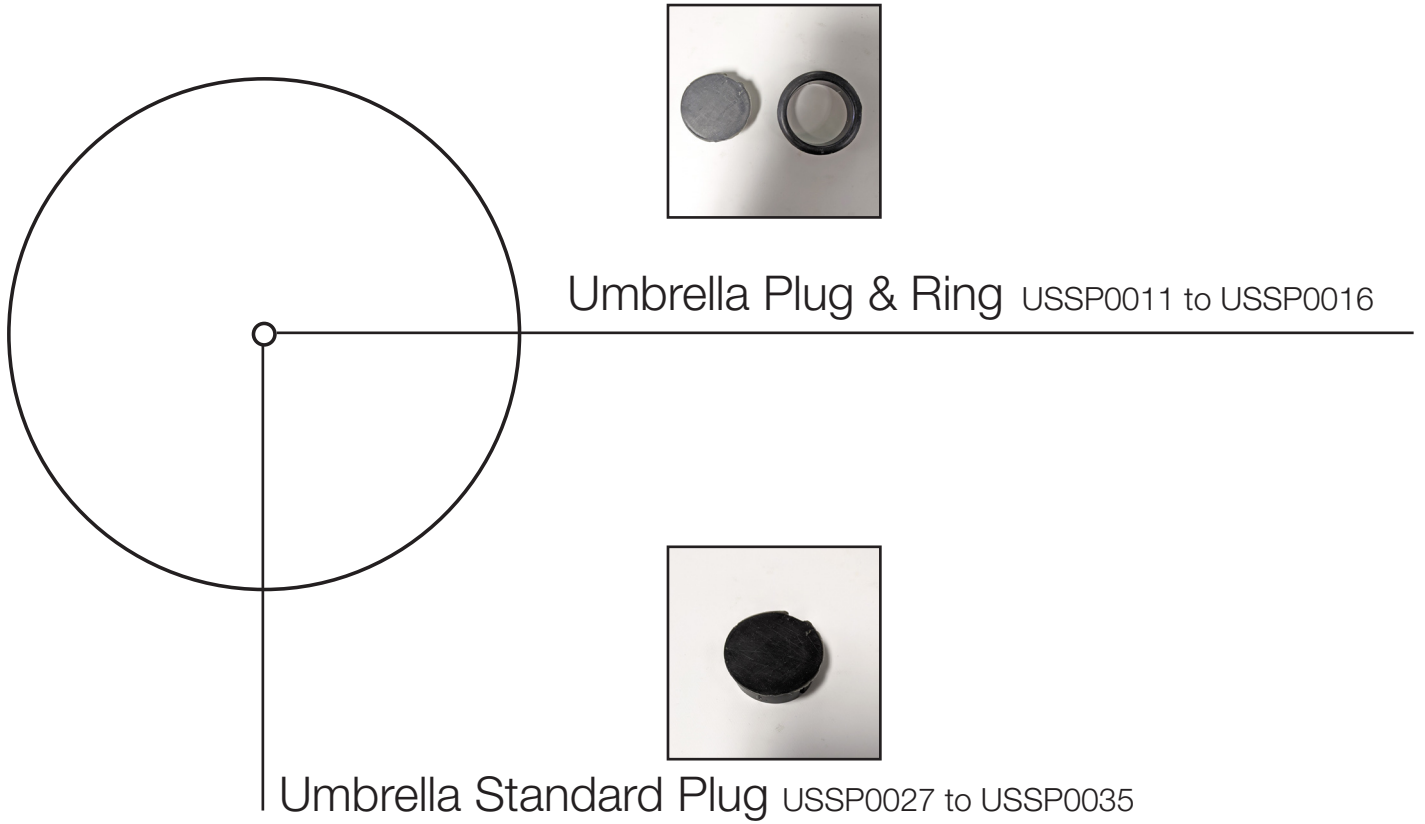
Product Description	Reference Number	Color	UPC Code 014306	Weight Each (lbs.)	Master Pack	Master Pack Volume (cu. ft)
42" Round Molded Melamine Tabletop with hole	UT255004	White	936277	33.00	1	1.38
	UT255742	Aged Oak	936215	33.00	1	1.38
	UT255780	Barn White	936222	33.00	1	1.38
	UT256038	Granite	939308	33.00	1	1.38
	UT255815	Almeria	940151	33.00	1	1.38
	UT255816	Arizona	940250	33.00	1	1.38

## Features & Benefits Warranty: 2 Yrs.

- Trendy marble, granite finish, textured or deco tops to complement all Grosfillex chairs.
- Hard, smooth molded tabletop made of a molded wood/resin body with a fusion bonded melamine top.
- Stain, burn, scratch, and fade resistant.
- Use Grosfillex's wide 4-prong alpha large resin base or resin y-leg base
- Large 1<sup>1/2</sup>" umbrella hole with protective resin fitting and cap.
- Cleans easily with soap and water.
- Specifically designed and engineered for fine dining in hospitality environments.
- Customize designs by mixing and matching tabletops and bases.
- Top and Base sold separately.

The shape of the table top may bend to a concave shape when exposed to direct sunlight. A deflection of as much as 3/16" per linear foot of table length can be expected. This is not a manufacturing defect as this deformation will not affect the structural integrity of the table nor its functionality.



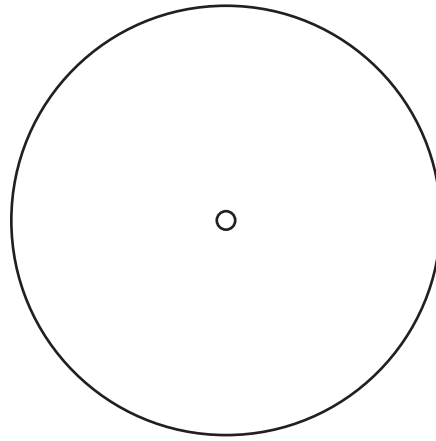


Reference #	Description
USSP0011	UMB PLUG & RING MM & FLDG CHAR
USSP0012	UMB PLUG & RING MM & FLDG WHIT
USSP0013	UMB PLUG & RING MM & FLDG WOOD
USSP0014	UMB PLUG & RING MM & FLDG BRNZ
USSP0016	UMB PLUG & RING MM & FLDG AMGR
USSP0027	UMB STD PLUG TABLE CHAR
USSP0028	UMB STD PLUG TABLE TAUPE
USSP0029	UMB STD PLUG TABLE WHITE
USSP0031	UMB STD PLUG TABLE WOOD
USSP0032	UMB STD PLUG TABLE BRONZE
USSP0035	UMB STD PLUG TABLE AMGRN



# 48" Round Molded Melamine Tabletop

with umbrella hole



Diameter: 48"  
Weight: 32 lbs  
Thickness: 0.67"

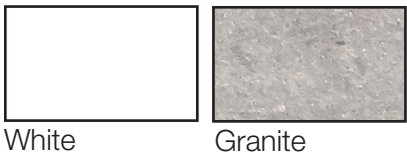
## Product Specifications

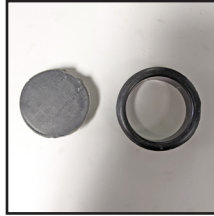
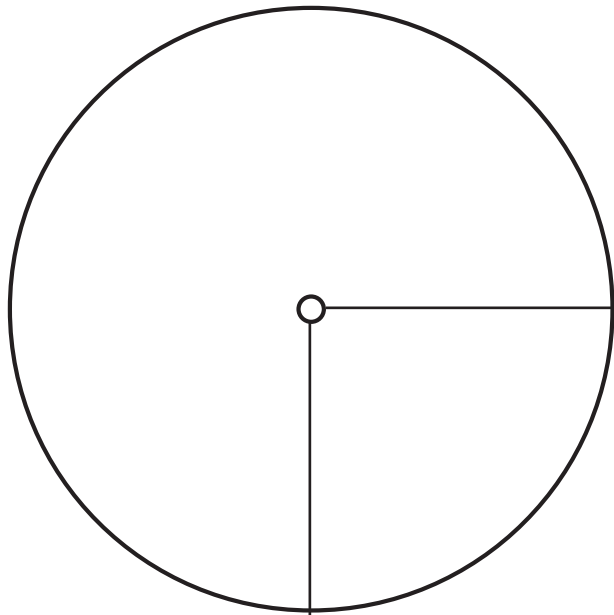
Product Description	Reference Number	Color	UPC Code 014306	Weight Each (lbs.)	Master Pack	Master Pack Volume (cu. ft)
48" Round Molded Melamine Tabletop with hole	UT260004	White	936291	39.00	1	1.96
	UT261038	Granite	939315	39.00	1	1.96

## Features & Benefits Warranty: 2 Yrs.

- Trendy top to complement all Grosfillex chairs.
- Hard, smooth molded tabletop made of a molded wood/resin body with a fusion bonded melamine top.
- Stain, burn, scratch, and fade resistant.
- Use Grosfillex's wide resin y-leg base with anti-skid glides for stability.
- Large 1<sup>1/2</sup>" umbrella hole with protective resin fitting and cap.
- Cleans easily with soap and water.
- Specifically designed and engineered for fine dining in hospitality environments.
- Customize designs by mixing and matching tabletops and bases.
- Top and Base sold separately.

The shape of the table top may bend to a concave shape when exposed to direct sunlight. A deflection of as much as 3/16" per linear foot of table length can be expected. This is not a manufacturing defect as this deformation will not affect the structural integrity of the table nor its functionality.





Umbrella Plug & Ring USSP0011 to USSP0016



Umbrella Standard Plug USSP0027 to USSP0035

Reference #	Description
USSP0011	UMB PLUG & RING MM & FLDG CHAR
USSP0012	UMB PLUG & RING MM & FLDG WHIT
USSP0013	UMB PLUG & RING MM & FLDG WOOD
USSP0014	UMB PLUG & RING MM & FLDG BRNZ
USSP0016	UMB PLUG & RING MM & FLDG AMGR
USSP0027	UMB STD PLUG TABLE CHAR
USSP0028	UMB STD PLUG TABLE TAUPE
USSP0029	UMB STD PLUG TABLE WHITE
USSP0031	UMB STD PLUG TABLE WOOD
USSP0032	UMB STD PLUG TABLE BRONZE
USSP0035	UMB STD PLUG TABLE AMGRN



# 48" x 32" Molded Melamine Tabletop

without umbrella hole



Length: 32"  
 Width: 48"  
 Weight: 36 lbs  
 Thickness: 0.75"

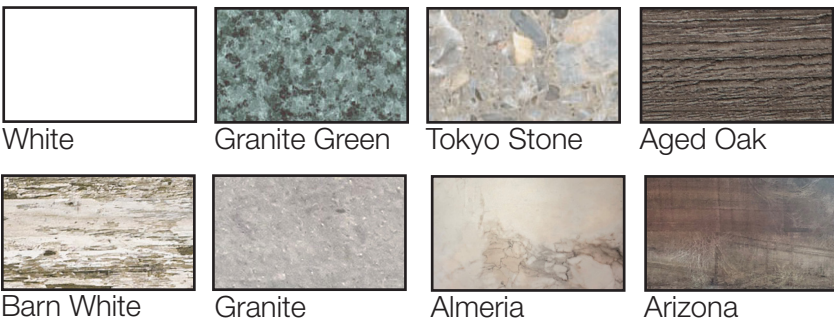
## Product Specifications

Product Description	Reference Number	Color	UPC Code 014306	Weight Each (lbs.)	Master Pack	Master Pack Volume (cu. ft)
48" x 32" Molded Melamine Tabletop without hole	UT270004	White	936390	39.00	1	1.44
	UT270025	Granite Green	936369	39.00	1	1.44
	UT270781	Tokyo Stone	936383	39.00	1	1.44
	UT270742	Aged Oak	936338	39.00	1	1.44
	UT270780	Barn White	936345	39.00	1	1.44
	UT271038	Granite	939322	39.00	1	1.44
	UT270815	Almeria	940168	39.00	1	1.44
	UT270816	Arizona	940267	39.00	1	1.44

## Features & Benefits Warranty: 2 Yrs.

- Trendy marble, granite finish, or deco tops to complement all Grosfillex chairs.
- Hard, smooth molded tabletop made of a molded wood/resin body with a fusion bonded melamine top.
- Stain, burn, scratch and fade resistant.
- Use Grosfillex's wide 4-prong alpha resin lateral base, boomerang lateral tilting base, Eco-fix lateral, X-One lateral base with anti-skid glides for stability.
- Cleans easily with soap and water.
- Specifically designed and engineered for indoor/outdoor terraces, bars, breakfast areas, concessions, and balconies.
- Customize designs by mixing and matching tabletops and bases.
- Tops and bases sold separately.

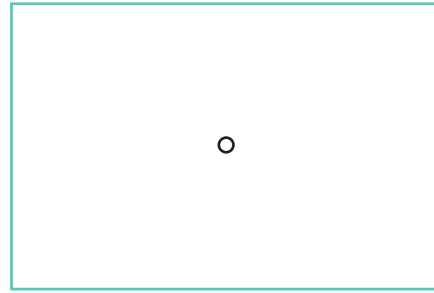
The shape of the table top may bend to a concave shape when exposed to direct sunlight. A deflection of as much as 3/16" per linear foot of table length can be expected. This is not a manufacturing defect as this deformation will not affect the structural integrity of the table nor its functionality.





# 48" x 32" Molded Melamine Tabletop

with umbrella hole



Length: 32"  
Width: 48"  
Weight: 36 lbs  
Thickness: 0.75"

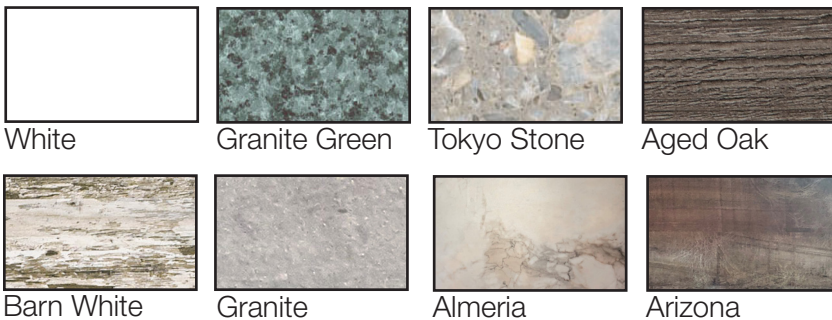
## Product Specifications

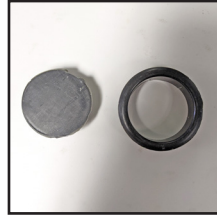
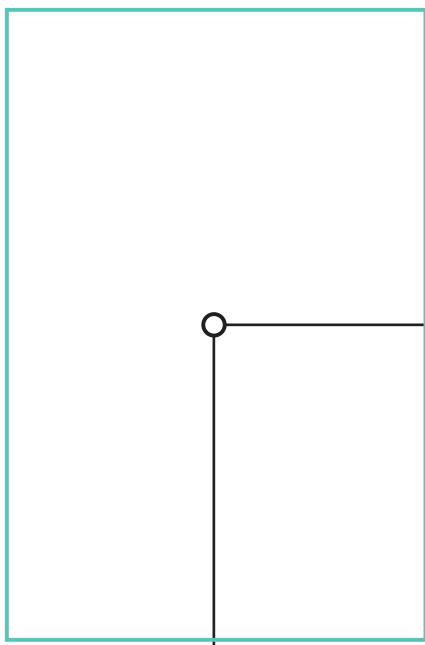
Product Description	Reference Number	Color	UPC Code	Weight Each (lbs.)	Master Pack	Master Pack Volume (cu. ft)
48" x 32" Molded Melamine Tabletop with hole	UT275004	White	936475	39.00	1	1.44
	UT275025	Granite Green	936444	39.00	1	1.44
	UT275781	Tokyo Stone	936468	39.00	1	1.44
	UT275742	Aged Oak	936413	39.00	1	1.44
	UT275780	Barn White	936420	39.00	1	1.44
	UT275038	Granite	936437	39.00	1	1.44
	UT275815	Almeria	940175	39.00	1	1.44
	UT275816	Arizona	940274	39.00	1	1.44

## Features & Benefits Warranty: 2 Yrs.

- Interior/Exterior commercial grade table.
- Trendy marble, granite finish, or deco tops to complement all Grosfillex chairs.
- Combines the outstanding resistance to wear, burns, and stains of melamine with the weight, strength, and attractive finish of solid wood.
- Use Grosfillex's alpha resin lateral base or alpha large resin base.
- Cleans easily with soap and water.
- Specifically designed and engineered for terraces, bars, concessions, breakfast areas, and other food service applications.
- Customize designs by mixing and matching tabletops and bases.
- Top and Base sold separately.

The shape of the table top may bend to a concave shape when exposed to direct sunlight. A deflection of as much as 3/16" per linear foot of table length can be expected. This is not a manufacturing defect as this deformation will not affect the structural integrity of the table nor its functionality.





Umbrella Plug & Ring USSP0011 to USSP0016



Umbrella Standard Plug USSP0027 to USSP0035

Reference #	Description
USSP0011	UMB PLUG & RING MM & FLDG CHAR
USSP0012	UMB PLUG & RING MM & FLDG WHIT
USSP0013	UMB PLUG & RING MM & FLDG WOOD
USSP0014	UMB PLUG & RING MM & FLDG BRNZ
USSP0016	UMB PLUG & RING MM & FLDG AMGR
USSP0027	UMB STD PLUG TABLE CHAR
USSP0028	UMB STD PLUG TABLE TAUPE
USSP0029	UMB STD PLUG TABLE WHITE
USSP0031	UMB STD PLUG TABLE WOOD
USSP0032	UMB STD PLUG TABLE BRONZE
USSP0035	UMB STD PLUG TABLE AMGRN