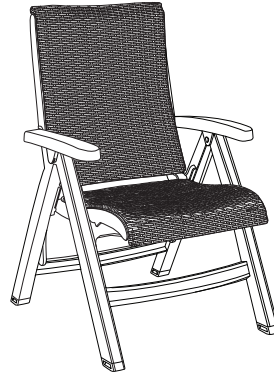




Java Folding Wicker Chair



Back Height:	40"
Seat Height:	18.5"
Arm Height:	24"
Depth:	29"
Width:	24.75"
Unit Weight:	17 lbs

Product Specifications

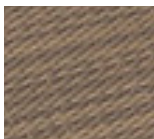
Product Description	Reference Number	Color	UPC Code 014306	Weight Each (lbs.)	Master Pack	Master Pack Volume (cu. ft)
Java Folding Wicker Chair	UT071037	Espresso/Bronze	946566	23.00	2	4.05
	UT071181	Mochaccino/Fr. Taupe	946559	23.00	2	4.05

Features & Benefits Warranty: 3 yrs.

- Specifically designed to provide comfort and ease of utilization and storage in hospitality environments.
- High strength resin wicker frame, specifically woven to perform in commercial outdoor environments.
- Viro® branded fiber highly flexible for comfort and resistant to color fading, cracking, peeling & breaking.
- Color coordinates with Grosfillex® Java All Weather Wicker chaise.
- Rated to 300 lbs. in compliance with the requirements of EN 1728 for non-residential use.
- Hard wearing footpads for extra wear resistance on hard deck surfaces.
- Folds flat for easy storage.
- Easy to clean - simply powerwash!
- A locking device secures the seat of the chair into position for safe use.
- Easy to replace wicker weave for repair or renovation.



Espresso



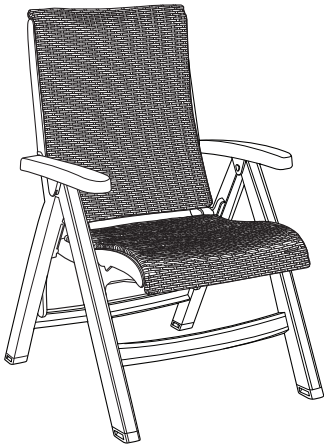
Mochaccino



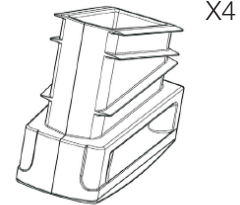
Java Folding Sling Chair

Spare Parts

Replacement Sling Hardware Kit USSP0326



Footpads USSP0291 & USSP0292



Reference	Description
USSP0291	FOOTPADS SET JB BLACK
USSP0292	FOOTPADS SET JB WHITE
USSP0326	REPL SLING HDW KIT JAVA/JB FLD